

background



Prior to Ecology Network, Greg Carson spent 3 years as Associate at WYG Environment, overseeing the London and south ecology teams, managing the service and project delivery.

Before this, Greg was the County Ecologist for a unitary authority in Wales, galvanising ecologically benign development, taking forward the local biodiversity action plan process and undertaking strategic work for the Wales Biodiversity Partnership. His work was strongly focussed on policy and legislation, and included a number of successful legal challenges. Greg has also worked for The Wildlife Trusts, leading on Earth Heritage and minerals issues.

Currently, Greg sits on the Council of the Institute of Ecology and Environmental Management (for which he chairs the External Affairs Committee) and the UK Great Crested Newt Steering Group. He holds survey licences for bats, dormice, water voles, otters, natterjack toads and great crested newts. Greg is also CSCS compliant and holds a PTS card.



Ecology Network is linked with Strix, a consultancy based in Portugal and working internationally, specialising in ecological impact of wind energy development.

contact

Further information on services and approach may be found on

www.ecologynetwork.co.uk

Please contact Greg (details below) to discuss your requirements or obtain advice.



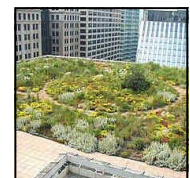
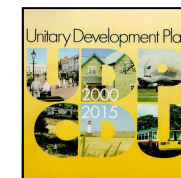
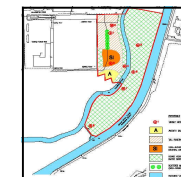
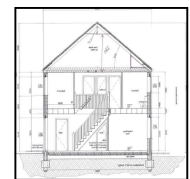
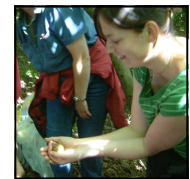
Dr Greg Carson, CEnv MIEEM

Ecology Network Ltd
Primrose Hill Business Centre
110 Gloucester Avenue
LONDON
NW1 8HX

+44 (0)7775 446260 m
+44 (0)207 483 2681 t
+44 (0)207 483 4541 f

info@ecologynetwork.co.uk

Registered company: 6906166



meeting your needs



With over 20 years experience in the private, public and voluntary sectors, Ecology Network Ltd delivers your project vision and desire to safeguard biodiversity.

From strategy or masterplanning to single surveys, an integrated approach ensures timely delivery at reduced costs.



sectors

- Architectural practice
- Education
- Energy
- Highways
- Housing associations
- Landscaping
- Local Authority
- Minerals
- Planning practice
- Private housing
- Rail
- Regeneration (Regional Development agencies, Homes and Communities Agency)
- Retail
- Waste
- Water companies



services

Strategy & Advice

BREEAM / Sustainable Homes assessments
Capacity-building
Consultation responses
Designated sites
Development masterplanning
Earth heritage conservation
Ecological risk assessment / Due diligence
Editing
Environmental / Ecological Impact Assessment
Expert witness
Green infrastructure
Habitat Regulations and Appropriate Assessment
Land-use forward planning / policy
Long-term monitoring programmes
Management plans
Mitigation design
Research
Sustainable urban drainage
Training



Surveys & Field

Badger sett closure and artificial sett construction
Extended Phase 1 habitat
Ecological Clerk of Works
Hedgerow Regulations
Invasive species (such as Japanese knotweed)
Protected species (surveys & habitat provision):

- Badgers
- Bats
- Great crested newts
- Reptiles
- Water voles
- Otters
- Dormice



Survey licences are held for all the above (where required) in England and Wales.

Other specialised surveys (such as NVC, bird and invertebrate) may be arranged also.

business & biodiversity



Climate change is widely recognised as the key environmental factor that will, in the future, fundamentally affect the way we live and work. Biodiversity (our ecosystems and their component animals and plants) serves both as indicator of, and remedy to, the effects of climate change.

It is for this reason why legislation put forward by Government and policy introduced by other consenting bodies seek to not only safeguard, but enhance biodiversity.



This provides us with challenges in the way we achieve our project aspirations. At the same time, it provides opportunity to enhance our environmental, as well as financial, competitiveness - increasingly important for delivering shareholder expectations, establishing reputation and gaining confidence from our partners and stakeholders.



Unlike most other factors that affect project delivery, ecology is seasonal, with relatively short periods to undertake detailed survey.

Recognising this at an early stage ensures well planned delivery to time and to budget, avoiding costly delays.